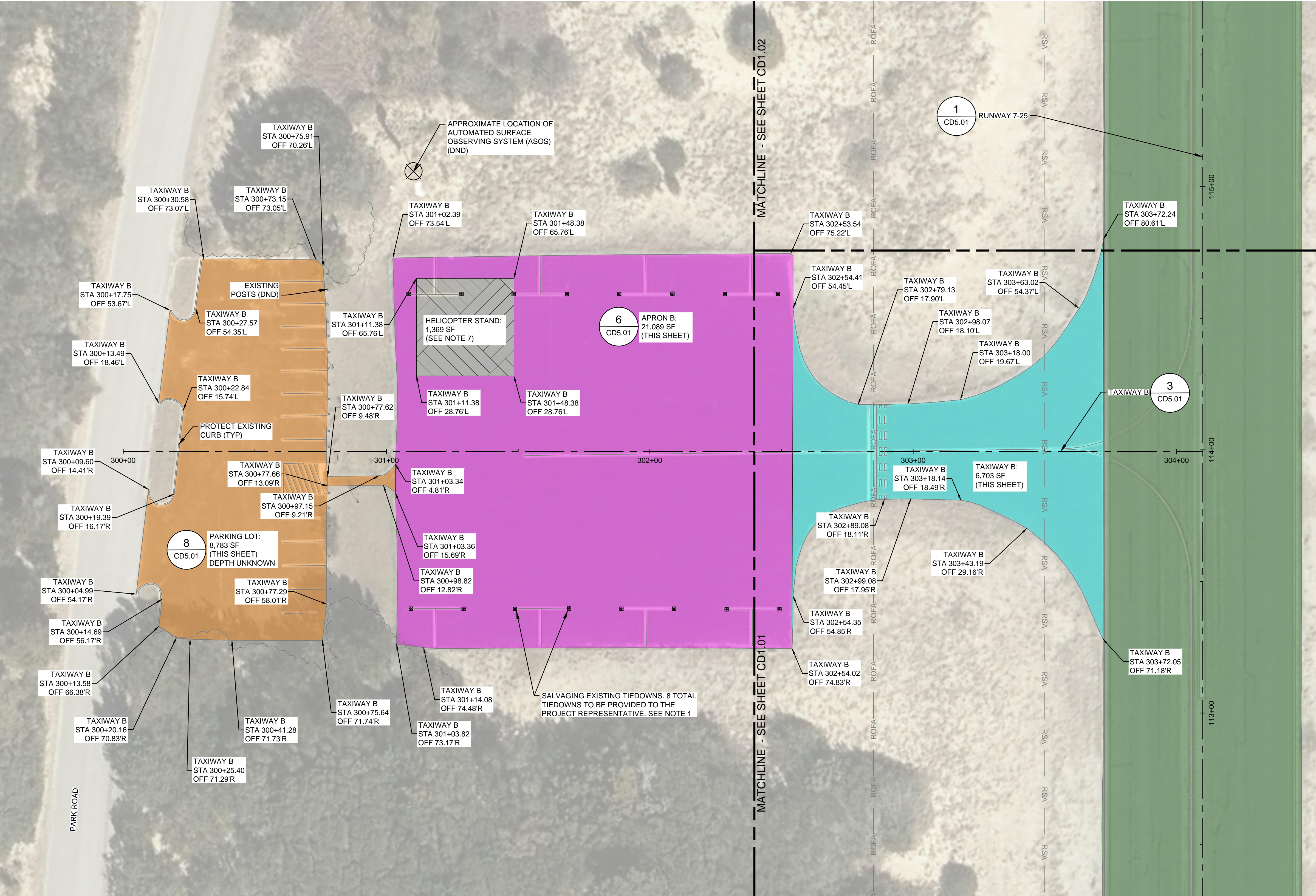


FILE NAME: OBX-HSE-CD1.DWG
PLOT DATE: Sep 13, 2024 - 3:57PM

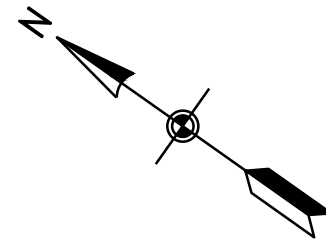


NOTES

- SALVAGING OF TIEDOWN ANCHORS WILL BE INCIDENTAL TO MILLING OPERATIONS. CONTRACTOR TO STORE TIEDOWNS IN LOCATION IDENTIFIED BY THE PROJECT REPRESENTATIVE. CONTRACTOR TO FILL REMAINING ANCHOR VOID WITH AGGREGATE BASE PRIOR TO COMPACTION OF EXISTING BASE (TYP).
- SEE SHEET CD5.01 FOR EXISTING PAVEMENT AND DEMOLITION TYPICAL SECTIONS.
- SEE SHEET GH.01 FOR EXISTING CONDITIONS AND ALIGNMENT DETAILS.
- SEE SHEETS C5.01 AND C5.02 FOR PAVING DETAILS.
- CONTRACTOR TO PROOF ROLL BASE AND RE-COMPACT BASE AS REQUIRED BY THE PROJECT REPRESENTATIVE. IF PROJECT REPRESENTATIVE DETERMINES THERE IS UNSUITABLE IN-SITU MATERIAL, THE CONTRACTOR WILL BE REQUIRED TO PROVIDE SUBGRADE STABILIZATION IN ACCORDANCE WITH SP-07.
- STATION AND OFFSET IS PROVIDED FOR REFERENCE. CONTRACTOR TO USE EXISTING PAVEMENT LIMITS AS THE LIMITS OF WORK.
- SEE DETAIL (1/C5.02) FOR DEPTH OF HELICOPTER EXCAVATION.

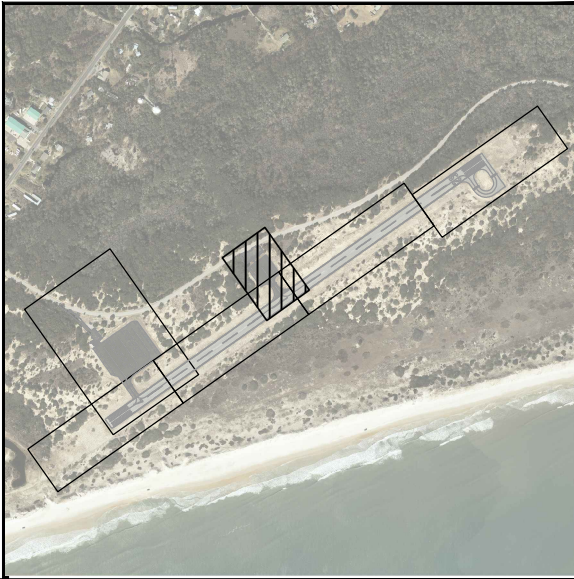
RUNWAY 7-25	RUNWAY REHABILITATION	SEE DETAIL (1/CD5.01)
TAXIWAY B	REMOVE PAVEMENT AND EXCAVATE FOR PAVEMENT SECTION, COMPACT SUBGRADE	SEE DETAIL (3/CD5.01)
APRON B	REMOVE PAVEMENT, PROOF ROLL BASE (SEE NOTE 5)	SEE DETAIL (6/CD5.01)
PARKING LOT AND ACCESS DRIVE	FULL DEPTH PAVEMENT REMOVAL	SEE DETAIL (8/CD5.01)
HELICOPTER STAND	FUTURE HELICOPTER STAND	SEE DETAIL (1/C5.02)

PRINT IN COLOR



0 10' 20' 40'
HORIZONTAL SCALE 1"=20'

KEY PLAN



WSP USA INC.
NORTH CAROLINA
LICENSE NO. F-0165

1001 MOREHEAD SQUARE DRIVE
SUITE 610
CHARLOTTE, NC 28203
T 704-342-5401 | www.wsp.com

NO.	DESCRIPTION	DATE

BILLY MITCHELL AIRPORT (HSE)

PAVEMENT REHABILITATION PROJECT
NCDOT PROJECT NO. 36244.74.1.1

53262 BILLY MITCHELL ROAD
FRISCO, NC 27936

ISSUED FOR BID

SEAL
053220
ENGINEER
Richard D. Bates
971672074

SHEET TITLE
**DEMOLITION PLAN
SHEET 3 OF 4**

DATE	SEPTEMBER 16, 2024
SCALE	1" = 20'
DRAWN BY	KR
CHECKED BY	RDB
APPROVED BY	RDB
WSP PROJECT NUMBER	188695-05
SHEET NUMBER	CD1.03
SHEET	9 OF 26